


How to... Use fabric

So that we can follow **PROJECTS** cards and **PATTERNS**, it's important to know what all the words mean. With **fabric**, we talk about the **right side** and the **wrong side** of the fabric.

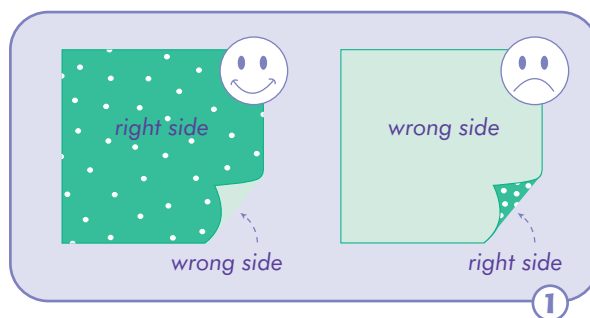
STEP 1

The **right side**, is the nice side, the one you want to be seen. 



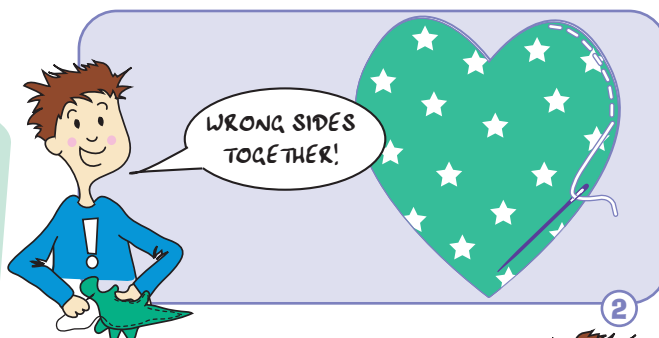
The **wrong side** is the back of the fabric or the nasty side.

With patterned fabric it's usually quite easy to see which side is which.



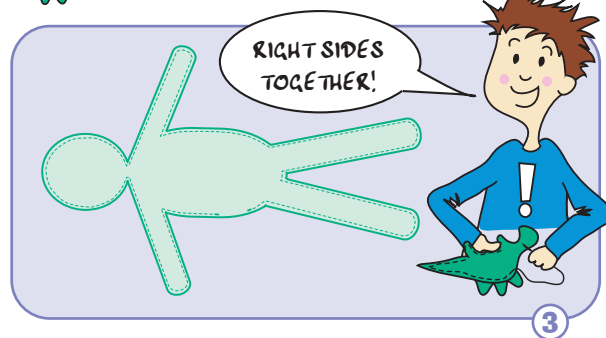
STEP 2

If we're sewing something with straight or blanket stitch that we want to be seen, we may be told to place the **wrong sides** together. We then sew our stitches where needed.



STEP 3

If we're sewing something where we don't want the stitches to be seen — like a pillow or clothes — we may be told to put the **right sides** together before sewing.



STEP 4

Now when we turn it inside out — the **right side** is on the **outside**! See?

