

Skills

How to...

Sew a hem

When we cut fabric it leaves a "raw" edge which could fray and doesn't look very good. A **hem** is a way of tidying up the edges of a fabric so they look nice.

Look at your clothes, can you see the **hems** at the edges?

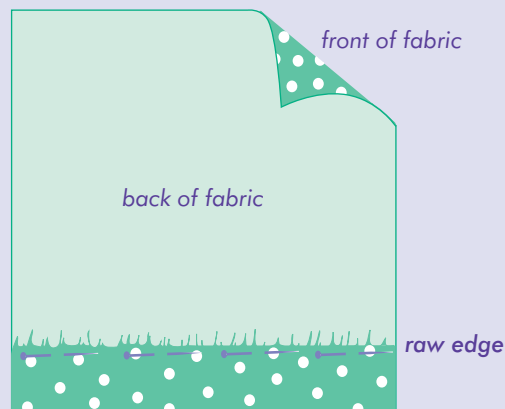
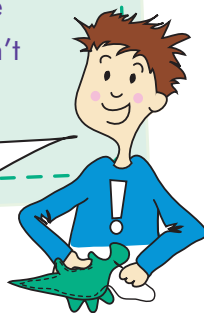


STEP 1

Fold the raw edge over, so that the wrong sides are touching. About 2 cm is usually plenty.

Make sure it's even all the way along, and pin. Make sure your pins are nearest the raw edge so they don't get in the way!

Be careful to remove any pins if they're in the way!



STEP 2

Sew a very straight line, all the way along.

Tip Hems can also be sewn by hand, using a very tiny slipstitch, or straight stitch!



See how much nicer it looks now?

